



www.lidr.com

France
Hôtel de Bureaux 1,
4 rue Gustave Eiffel,
10430 Rostères Prés Troyes
Mailing Address:
Technopôle de l'Aube BP 2
10902 Troyes Cedex 9, France
+33 (0)3 25 82 32 63

China
Beijing Global Trade Center #36
North Third Ring Road East,
Unit 06, Level 19, Building A,
Dongcheng District,
Beijing, China, 100013
+86 10 58256655

Brazil
Av. Pereira Barreto, 1395
Torre sul - CJ 193 - Bairro Paraiso
Santo André - São Paulo
CEP: 09190-610
Brazil
+55 11 43327755

United States
13785 Research Boulevard
Suite 200
Austin, TX 78750
USA
512.344.3333



LDR, LDR Spine, LDR Medical, BF+, BF+(ph), EasySpine, C-Plate, SpineTune, MC+, Moby, Mobi-C, Mobic-L, Mobic-S, ROI, ROI-A, ROI-T, ROI-C, Avenue L and verteBRIDGE are trademarks or registered trademarks of LDR Holding Corporation or its affiliates in France, the United States or other countries.
Document intended for the exclusive use of healthcare professionals.
MOBI-C® Sterile cervical disc prosthesis is a class IIb CE marked medical device made by the LDR Medical S.A.S. Company and for which the conformity assessment was carried out by the notified body G-Med N°0459. MOBI-C® prosthesis is a device for cervical intervertebral disc replacement (C3/C4, C4/C5, C5/C6, C6/C7) in order to restore segmental motion and disc height.
Before any surgical procedure, read carefully the instructions and the surgical technique.



REF: MB B 2 EN 12.2014 D

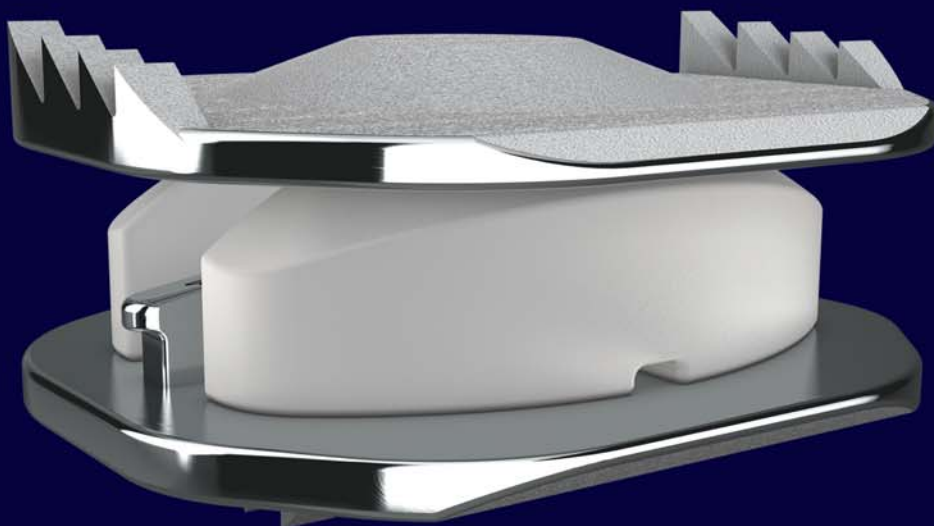
Non-confidential photos.



Mobi-C®

Plug & Fit

CERVICAL DISC PROSTHESIS



Mobi-C[®]

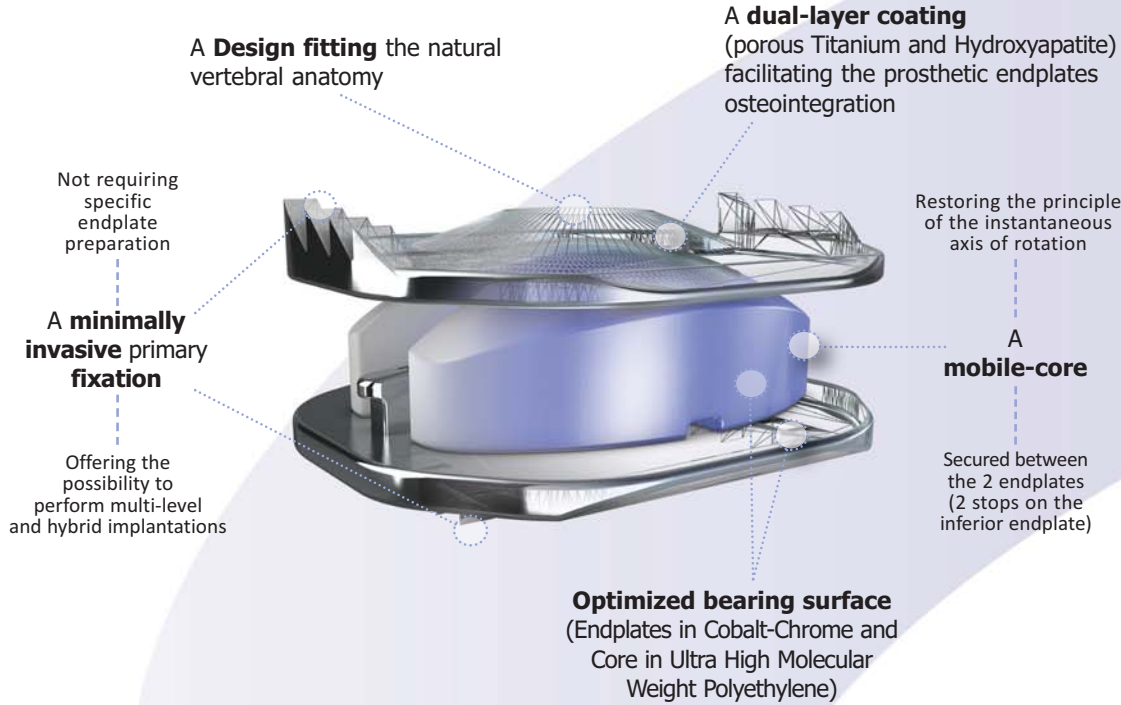
Plug & Fit

CERVICAL DISC PROSTHESIS

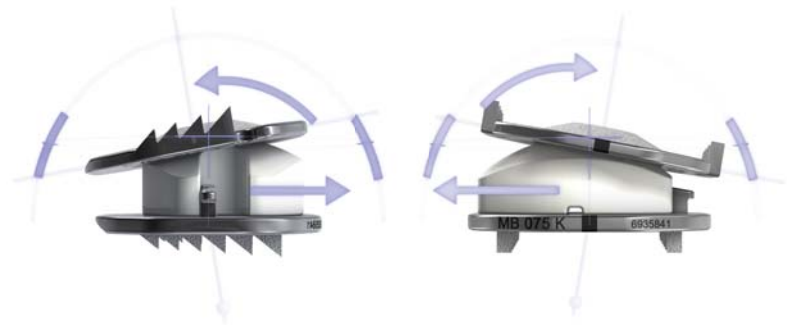


Favored Physiological Biomechanics

Designed to optimize stability



- Restoration of **physiological controlled mobility** reduces the constraints on the implants as well as the articular facets (up to +/-10° in flexion/extension and lateral bending).
- The **Mobile Core** Technology on which Mobi-C is based, allows the core to self-adjust during cervical spine movement encouraging restoration of the instantaneous axis of rotation.



A simple and reproducible surgical technique

- The prosthesis is delivered **pre-assembled** on radiolucent jaws, allowing for control of its positioning without dismantling.



- The **single** and ergonomic implant holder allow for **millimetric** antero-posterior **adjustment** of the implant.



A wide range adapts to all patient anatomies *

Up to 32 combinations from height **4,5 mm**.

AVAILABLE HEIGHTS	Depth (mm)				
	13	15	17	19	
Width (mm)	15	4,5 mm 5 mm 6 mm 7 mm**	4,5 mm 5 mm 6 mm 7 mm**	-	-
	17	4,5 mm 5 mm 6 mm 7 mm**	4,5 mm 5 mm 6 mm 7 mm**	4,5 mm 5 mm 6 mm 7 mm**	-
	19	-	4,5 mm 5 mm 6 mm 7 mm**	4,5 mm 5 mm 6 mm 7 mm**	4,5 mm 5 mm 6 mm 7 mm**

* The availability of the product may vary upon country and market.
** Available upon special request.